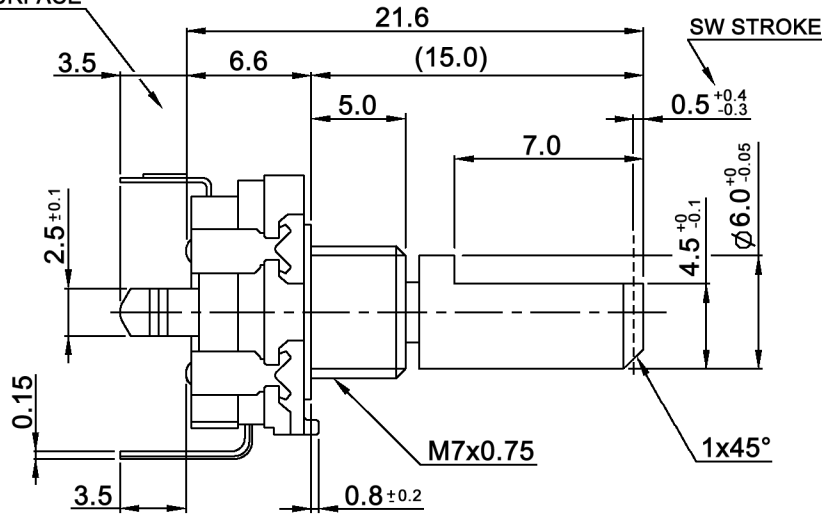
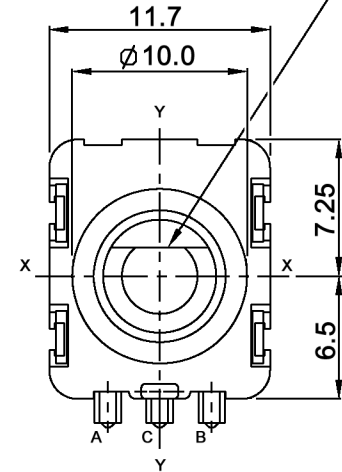


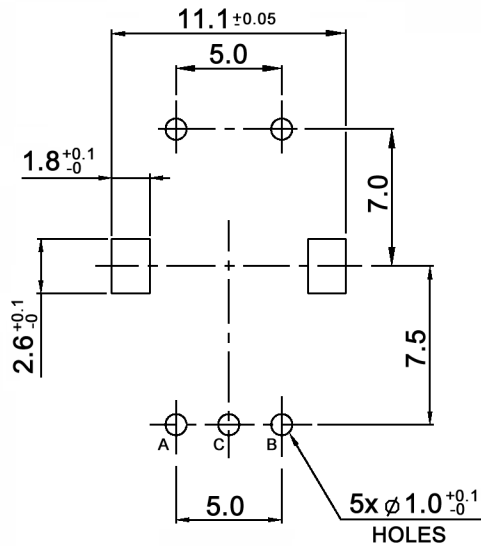
MOUNTING SURFACE



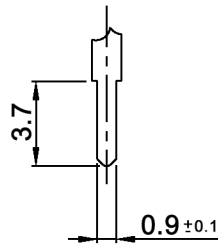
SHAFT FLAT IS OPTIONAL ANGLE



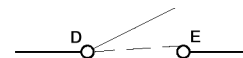
P.C.B. MOUNTING
t=1.6mm



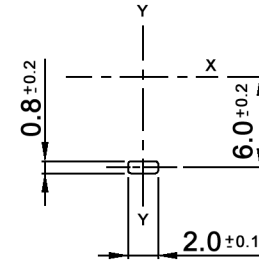
TERMINAL DETAIL



CIRCUIT DIAGRAM



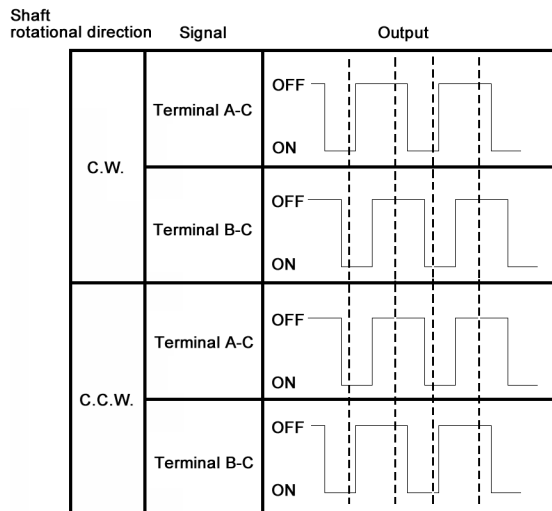
LOCATING LUG DETAIL



Tolerances:			Date	Name	MERP11-15115AM7
			02/08	dr	
			knitter-switch		30 13 99
Modifications			Date	Name	Page 1/2

Specifications:

Contact rating: 10mA (min. 1mA), 5V DC
Contact resistance: 100mOhm max.
Insulation resistance: 100MOhm min. at 250V DC
Dielectric strength: 300V AC for 1 minute
Operating temperature: -10°C to +45°C
Storage temperature: -10°C to +65°C
Mechanical life (switch): 25 000 cycles
Rotational life: 15 000 cycles
Operating force (switch): 6 +/-3N (612 +/-306gf)
Torque: 30 to 190gf.cm
Resolution: 15 pulses
No. of detents: 30 detents, step angle 12° +/-3°
Soldering conditions: manual soldering: 350°C, 3sec.
 auto-soldering: 260 +/-5°C, 5 +/-1sec.



Tolerances:			Date	Name	<h1>MERP11-15115AM7</h1>	<h2>30 13 99</h2>	knitter-switch	Page
			02/08	dr				
Modifications	Date	Name						